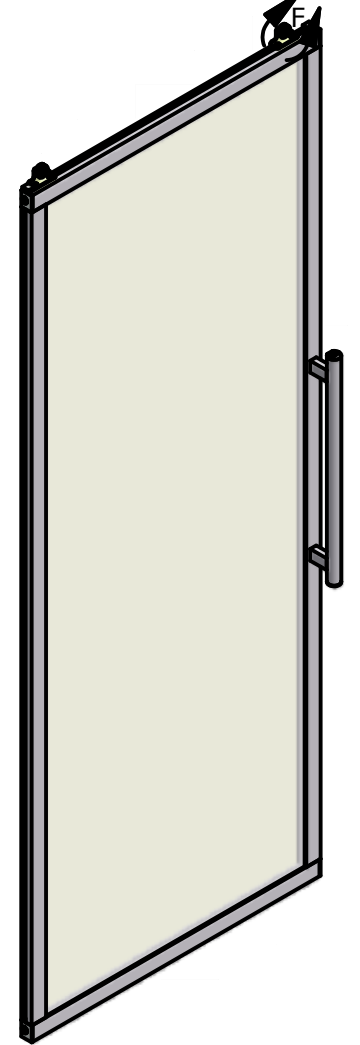
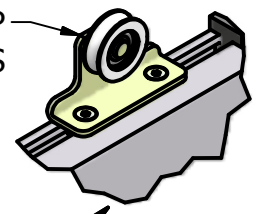

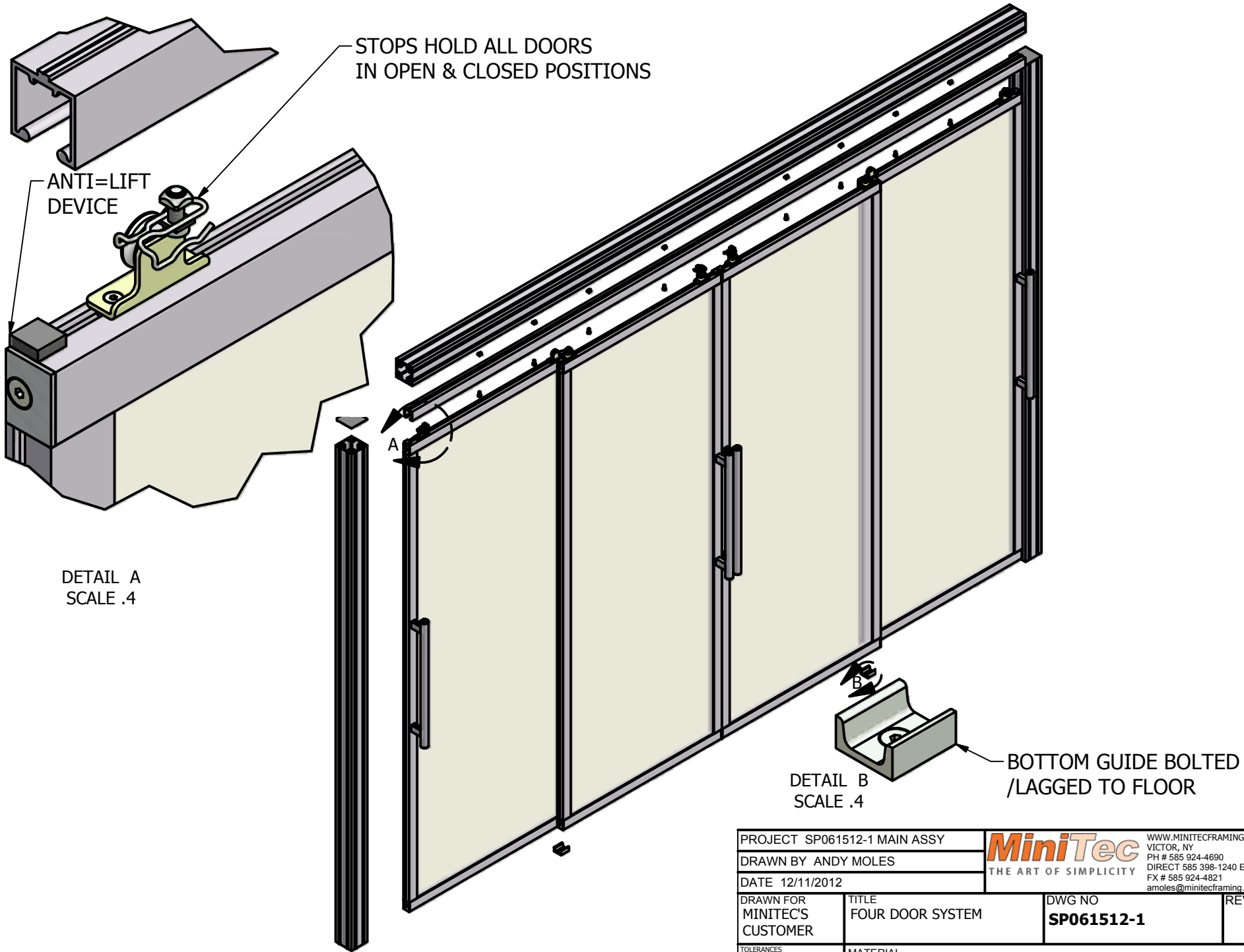



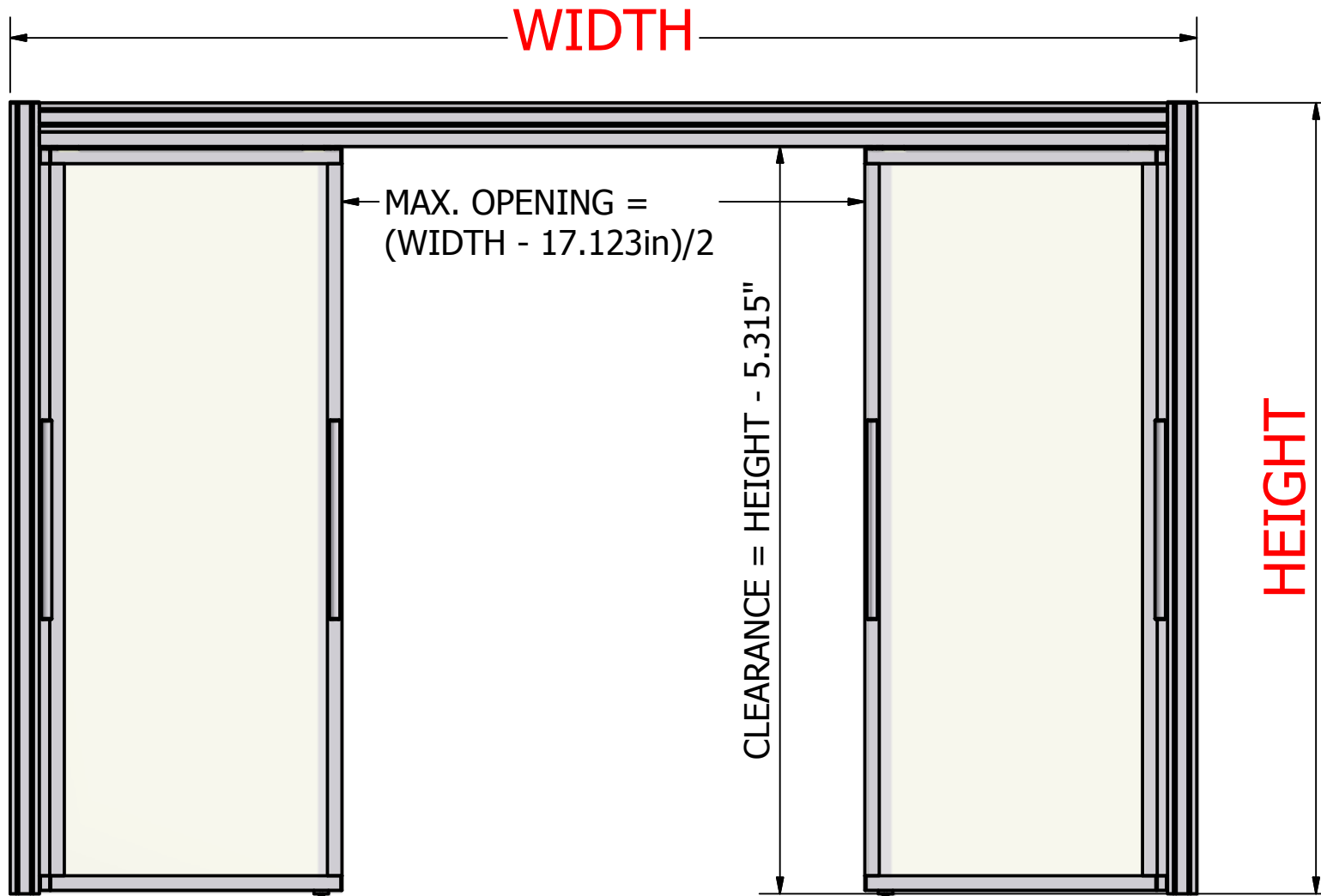
DOORS ROLL FROM THE TOP  
ON TWO BALL BEARING ROLLERS




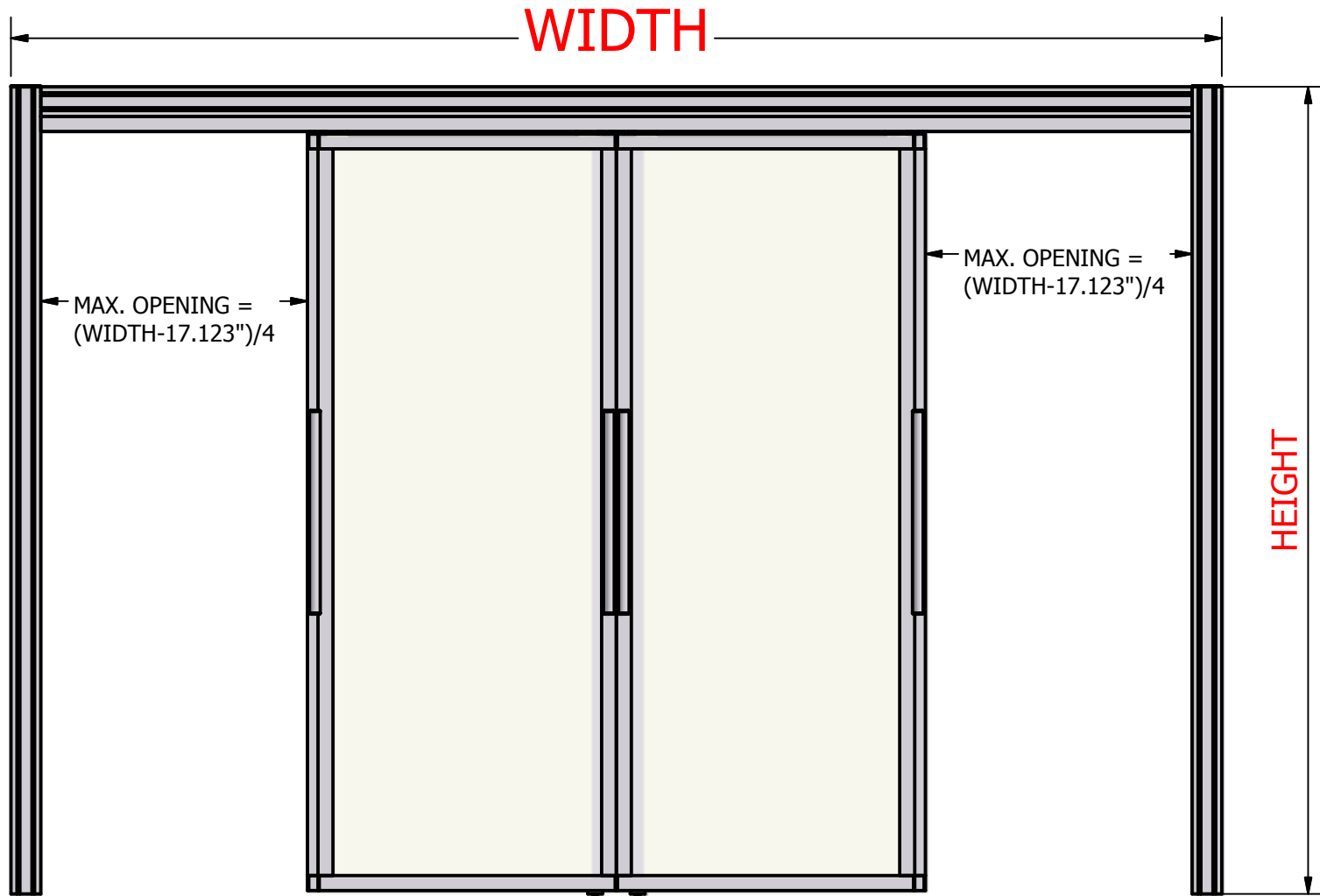
PROJECT SP061512-1 MAIN ASSY		 <small>WWW.MINITECFRAMING.COM VICTOR, NY PH # 585 924-4690 DIRECT 585 398-1240 EXT 104 FX # 585 924-4821 amoles@minitecframing.com</small>	
DRAWN BY ANDY MOLES			
DATE 12/11/2012			
DRAWN FOR MINITEC'S CUSTOMER	TITLE FOUR DOOR SYSTEM	DWG NO <b>SP061512-1</b>	REV
<small>TOLERANCES UNLESS OTHERWISE NOTED X +/- .125" .XX +/- .015" .XXX +/- .010"</small>		MATERIAL	SHEET 1 OF 5
		FINISH	




PROJECT SP061512-1 MAIN ASSY		 <small>THE ART OF SIMPLICITY</small>	<small>WWW.MINITECFRAMING.COM</small> <small>VICTOR, NY</small> <small>PH # 585 924-4690</small> <small>DIRECT 585 398-1240 EXT 104</small> <small>FX # 585 924-4821</small> <small>amoles@minitecframing.com</small>	
DRAWN BY ANDY MOLES				
DATE 12/11/2012				
DRAWN FOR MINITEC'S CUSTOMER	TITLE FOUR DOOR SYSTEM	DWG NO <b>SP061512-1</b>	REV	
<small>TOLERANCES UNLESS OTHERWISE NOTED</small> <small>X +/- .125"</small> <small>.XX +/- .015"</small> <small>.XXX +/- .010"</small>		MATERIAL	FINISH	
				SHEET 2 OF 5

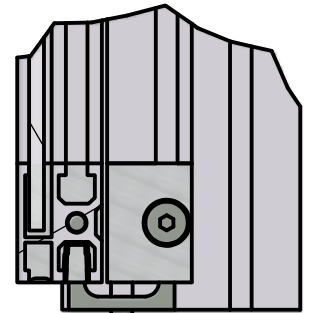
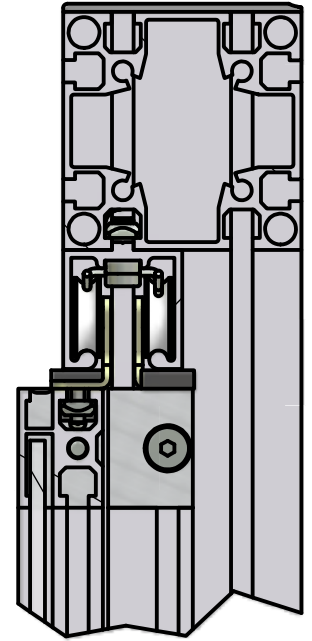
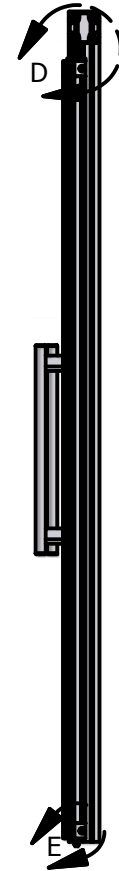
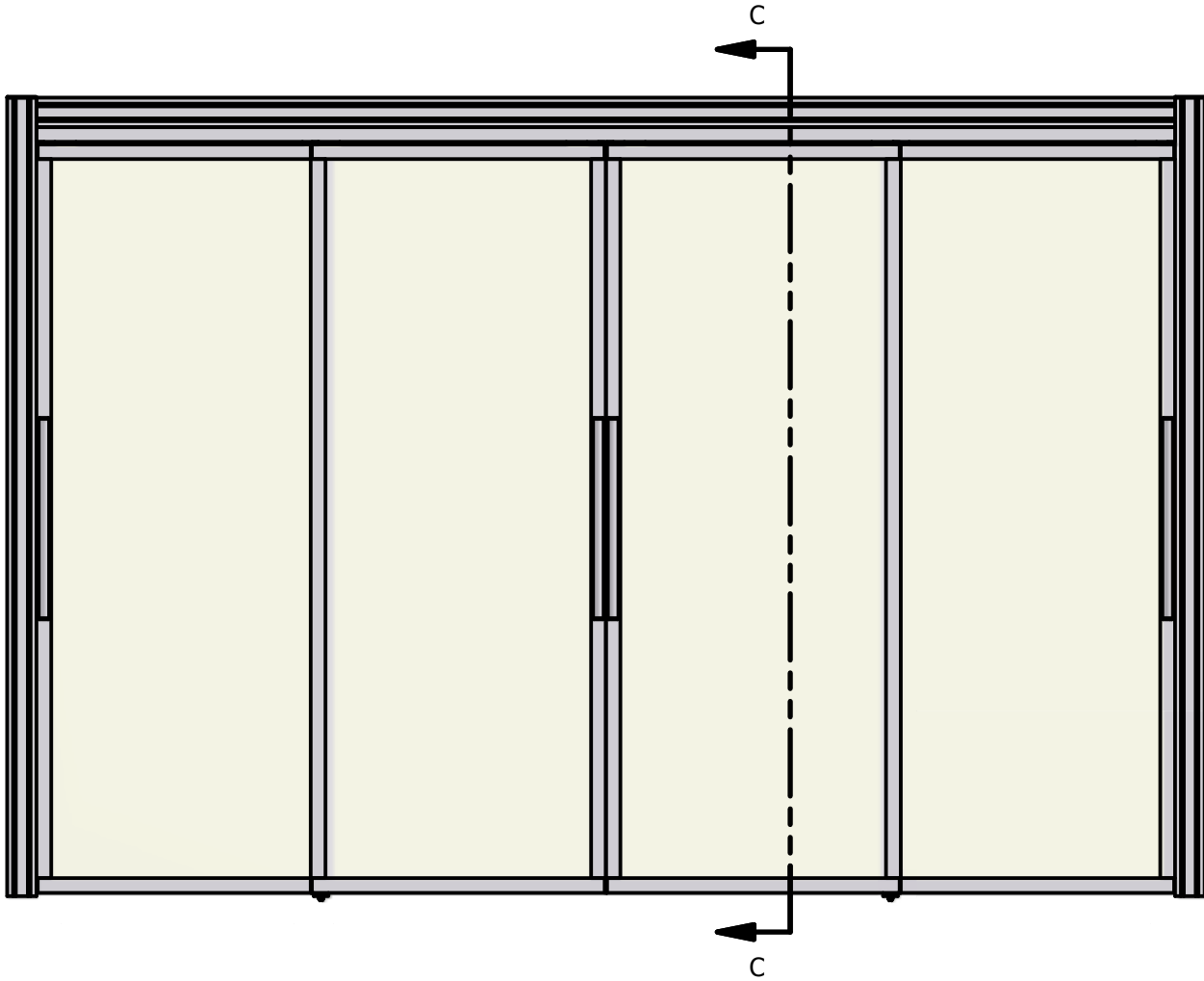


PROJECT SP061512-1 MAIN ASSY		 <small>THE ART OF SIMPLICITY</small>	<small>WWW.MINITECFRAMING.COM</small> <small>VICTOR, NY</small> <small>PH # 585 924-4690</small> <small>DIRECT 585 398-1240 EXT 104</small> <small>FX # 585 924-4821</small> <small>amoles@minitecframing.com</small>	
DRAWN BY ANDY MOLES			DWG NO	
DATE 12/11/2012			<b>SP061512-1</b>	
DRAWN FOR MINITEC'S CUSTOMER		TITLE FOUR DOOR SYSTEM		REV
<small>TOLERANCES UNLESS OTHERWISE NOTED</small> <small>X +/- .125"</small> <small>XX +/- .015"</small> <small>.XXX +/- .010"</small>		MATERIAL		SHEET 3 OF 5
		FINISH		



PROJECT SP061512-1 MAIN ASSY		 <small>WWW.MINITECFRAMING.COM          VICTOR, NY          PH # 585 924-4690          DIRECT 585 398-1240 EXT 104          FX # 585 924-4821          amoles@minitecframing.com</small>	
DRAWN BY ANDY MOLES			
DATE 12/11/2012			
DRAWN FOR MINITEC'S CUSTOMER	TITLE FOUR DOOR SYSTEM	DWG NO <b>SP061512-1</b>	REV
<small>TOLERANCES          UNLESS OTHERWISE NOTED          X +/- .125"          .XX +/- .015"          .XXX +/- .010"</small>		MATERIAL	SHEET 4 OF 5
		FINISH	


DETAIL D  
SCALE .35



SECTION C-C  
SCALE .045

.098

DETAIL E  
SCALE .35

PROJECT SP061512-1 MAIN ASSY		 <small>WWW.MINITECFRAMING.COM VICTOR, NY PH # 585 924-4690 DIRECT 585 398-1240 EXT 104 FX # 585 924-4821 amoles@minitecframing.com</small>	
DRAWN BY ANDY MOLES			
DATE 12/11/2012			
DRAWN FOR MINITEC'S CUSTOMER	TITLE FOUR DOOR SYSTEM	DWG NO <b>SP061512-1</b>	REV
TOLERANCES UNLESS OTHERWISE NOTED X +/- .12" .XX +/- .015" .XXX +/- .010"		MATERIAL	
		FINISH	SHEET 5 OF 5